



Association of Illinois

# Monthly Training Session

## Incident Management Overview

Mike Moos, IPEM  
2022 March



# Agenda

## Introduction

### NIMS

National Incident  
Management System

### ICS

Incident Command  
System

### IAP

Incident Action Plan

### EOP

Emergency Operations  
Plan

## Training

### NQS

National Qualification  
System

## Q & A



# How Did We Respond to Incidents?





# Do You Really Want to Herd Cats?





# Homeland Security Presidential Directive 5

February 28, 2003

All of the nations first responders are required to have basic training in and be familiar with NIMS concept and operational procedures



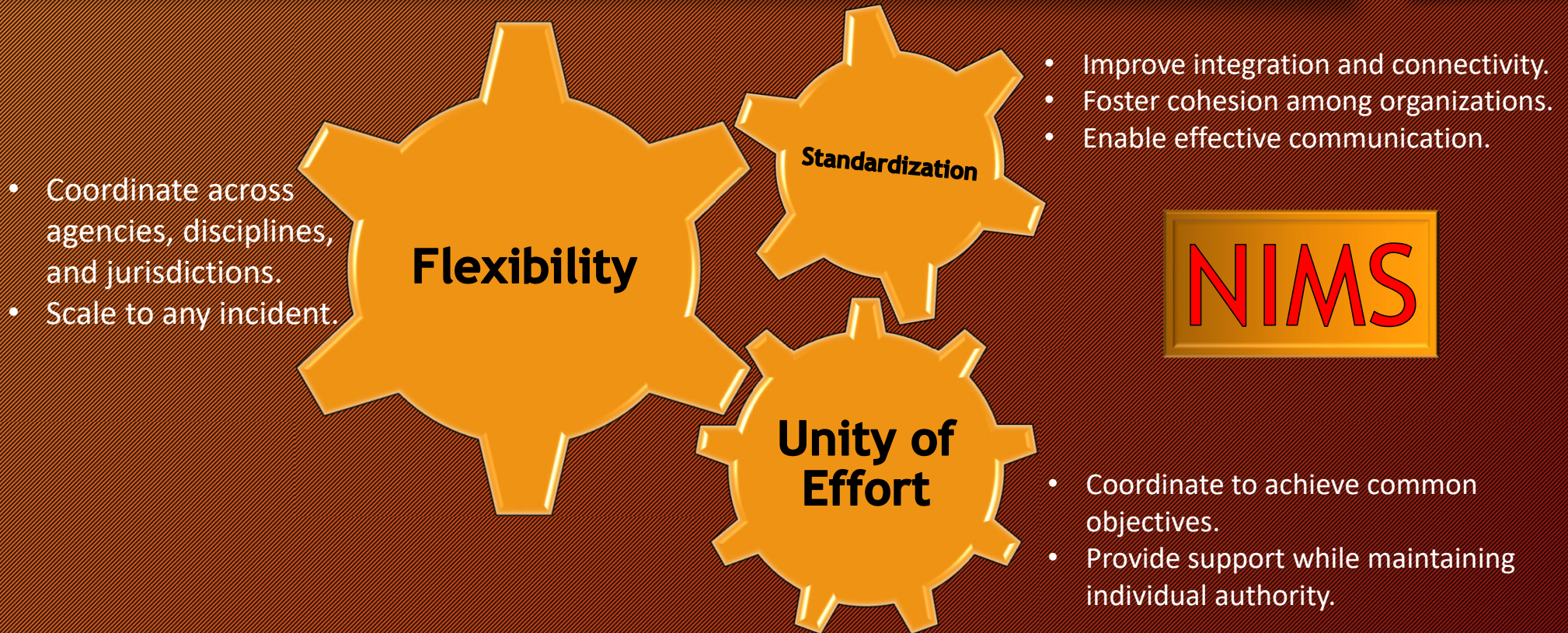


# One Common Framework

- NIMS/ICS/EOC/Training/Qualifications **components** of the National Framework
- **Single system** for managing domestic incidents across the Continental United States (CONUS) and territories.
- **Suitable for all**: industry, educational systems, hospitals and other partners.
- A **core set of comprehensive principles and procedures** that allow us to manage emergencies and coordinate with one another.
- **Connects to all** community partners ie: private industry, institutions and government (local, regional, state & federal).



# Guiding Principles that Mesh Together





# CERT & NIMS: A Nationwide Approach

- **Standardize**

- Organizational Structure
  - Span & Control
- Procedures
- Equipment
- Terminology

- **All Hazard Approach**

- Cause
- Size
- Location or
- Complexity

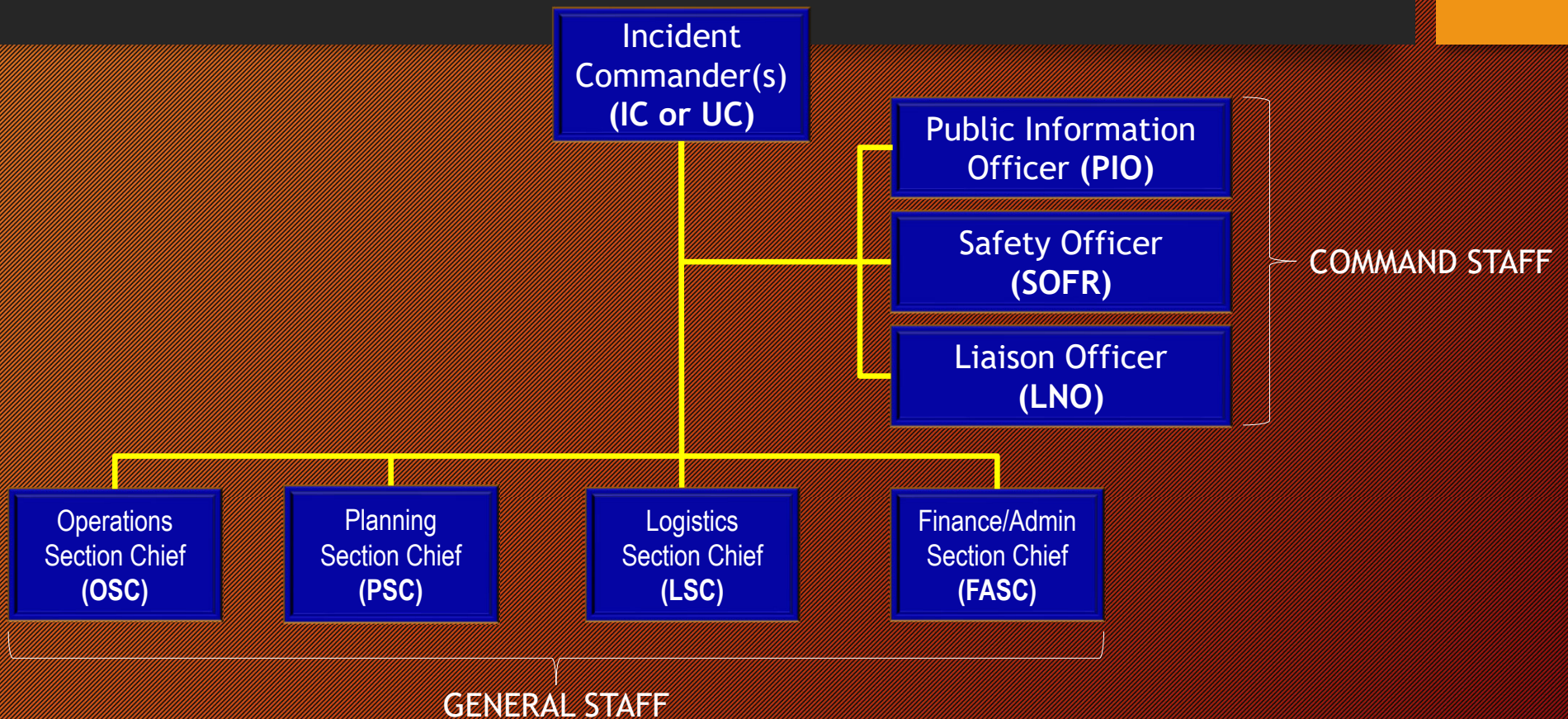


# CERT & National Preparedness Goals

- The CERT Program supports the National Preparedness and FEMA's 2018-2022 Strategic Plan goals.
- The program fits well with the strategic directive to laying a foundation of a culture of preparedness.
- Every community, neighborhood, household, private and public sectors, faith-based organizations, and all levels of government (local, regional/metropolitan, state, tribal, territorial) can benefit from and implement a CERT Program.

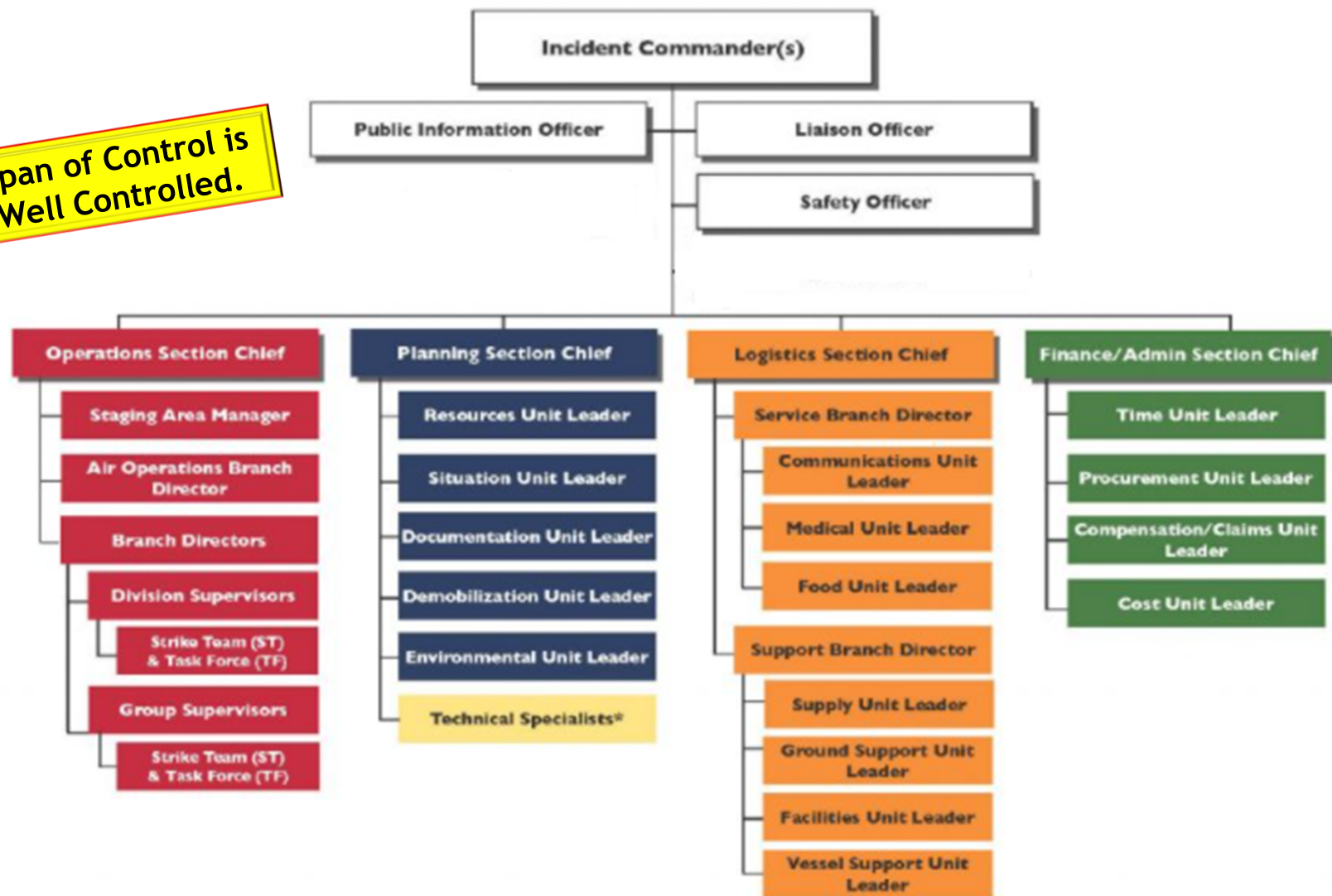


# Incident Command System (ICS)





Span of Control is Well Controlled.





# Form ICS 207

## INCIDENT ORGANIZATION CHART (ICS 207)

<b>1. Incident Name:</b> _____	<b>2. Operational Period:</b> Date From: _____ Date To: _____ Time From: _____ Time To: _____		
<b>3. Organization Chart</b> <div style="text-align: center; margin-top: 20px;"> <pre> graph TD     IC[Incident Commander(s)]     LO[Liaison Officer]     SO[Safety Officer]     PIO[Public Information Officer]     OSC[Operations Section Chief]     SAM[Staging Area Manager]     PSC[Planning Section Chief]     LSC[Logistics Section Chief]     FASC[Finance/Admin Section Chief]          IC --- LO     IC --- SO     IC --- PIO     IC --- OSC     IC --- SAM     IC --- PSC     IC --- LSC     IC --- FASC          OSC --- U1[ ]     OSC --- U2[ ]     OSC --- U3[ ]     OSC --- U4[ ]          PSC --- RUL[Resources Unit Ldr.]     PSC --- SUL[Situation Unit Ldr.]     PSC --- DUL[Documentation Unit Ldr.]     PSC --- DUL2[Demobilization Unit Ldr.]     PSC --- U5[ ]          LSC --- SBD[Support Branch Dir.]     LSC --- SUL2[Supply Unit Ldr.]     LSC --- FUL[Facilities Unit Ldr.]     LSC --- GSDL[Ground Spt. Unit Ldr.]     LSC --- SBD2[Service Branch Dir.]     LSC --- CUL[Comms Unit Ldr.]     LSC --- MUL[Medical Unit Ldr.]     LSC --- FUL2[Food Unit Ldr.]          FASC --- TUL[Time Unit Ldr.]     FASC --- PUL[Procurement Unit Ldr.]     FASC --- CCL[Comp./Claims Unit Ldr.]     FASC --- CUL2[Cost Unit Ldr.]     FASC --- U6[ ]           </pre> </div>			
ICS 207	IAP Page ____	<b>4. Prepared by:</b> Name: _____ Position/Title: _____ Signature: _____ Date/Time: _____	



## Org Chart - ICS 207 Level 5-7 (\$2.5m - \$10m+)





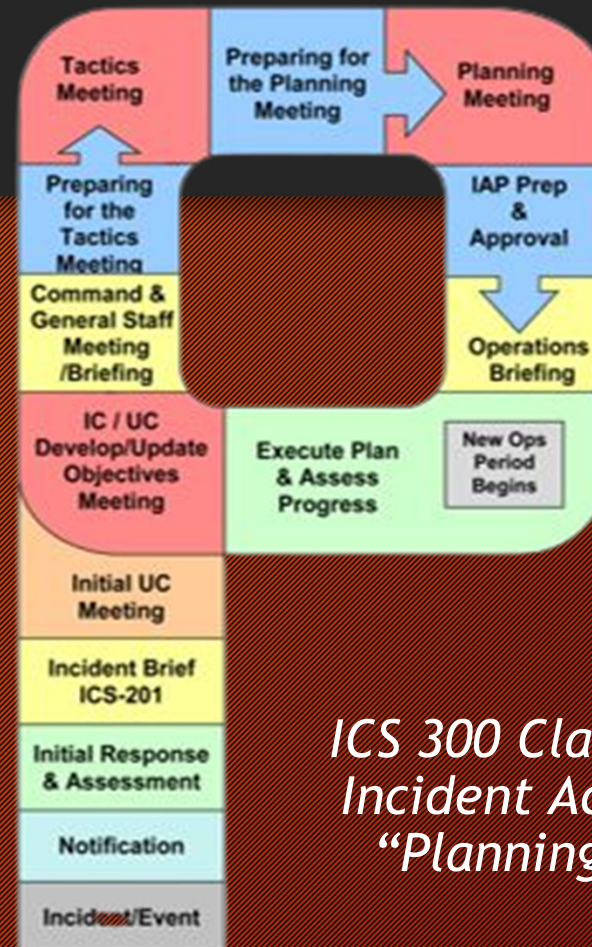
# ICS Structure and CERT Roles

Emergency Responder	Role	CERT Volunteer
Incident Commander (IC)	<ul style="list-style-type: none"><li>• Leader</li><li>• Decides what is to be done</li><li>• Emergency Responder (<i>not a CERT Role</i>)</li></ul>	Team Leader (TL)
Operations Section Chief (OPS)	<ul style="list-style-type: none"><li>• Doer</li><li>• Implements the decisions made by the IC/TL and performs actions.</li></ul>	Operations
Logistic Section Chief (LOSC)	<ul style="list-style-type: none"><li>• Getter</li><li>• Ensures that personnel equipment and tools required by ops to implement the decisions are in the right place, right time, right quantities.</li></ul>	Logistics
Planning Section Chief (PSC)	<ul style="list-style-type: none"><li>• Thinker, anticipates required personnel, materials &amp; tasks.</li></ul>	Planning



# Planning P

- Each IAP is for a set Operational Period (Days and Times indicated)
- IAPs provide tactical guidance based on objectives for that operational period
- IAPs are flexible to be used for the simplest of incidents to very complicated.
- IAPs communicate your battle plan to all organizations involved in the incident.





# Incident Action Plan (IAP) Contains

- **Incident Goals** (where the response system wants to be at the end of response)
- **Operational Period Objectives** (major areas that must be addressed in the specified operational period to achieve the goals or control objectives)
- **Response Strategies** (priorities and the general approach to accomplish the objectives)
- **Response Tactics** (methods developed by Operations to achieve the objectives)
- Organization list with **ICS Chart showing primary roles** and relationships
- **Assignment Lists** with specific tasks
- **Critical situation Updates** and assessments
- Composite **Resource Status** updates
- **Health and Safety Plan** (to prevent responder injury or illness)
- **Communications Plan** (functional areas can exchange information)
- **Logistics Plan** (e.g., procedures to support Operations with equipment, supplies, etc.)
- **Responder medical Plan** (providing direction for care to responders)
- **Incident Map** (i.e., map of incident scene)
- **Additional component plans, as indicated by the incident.**



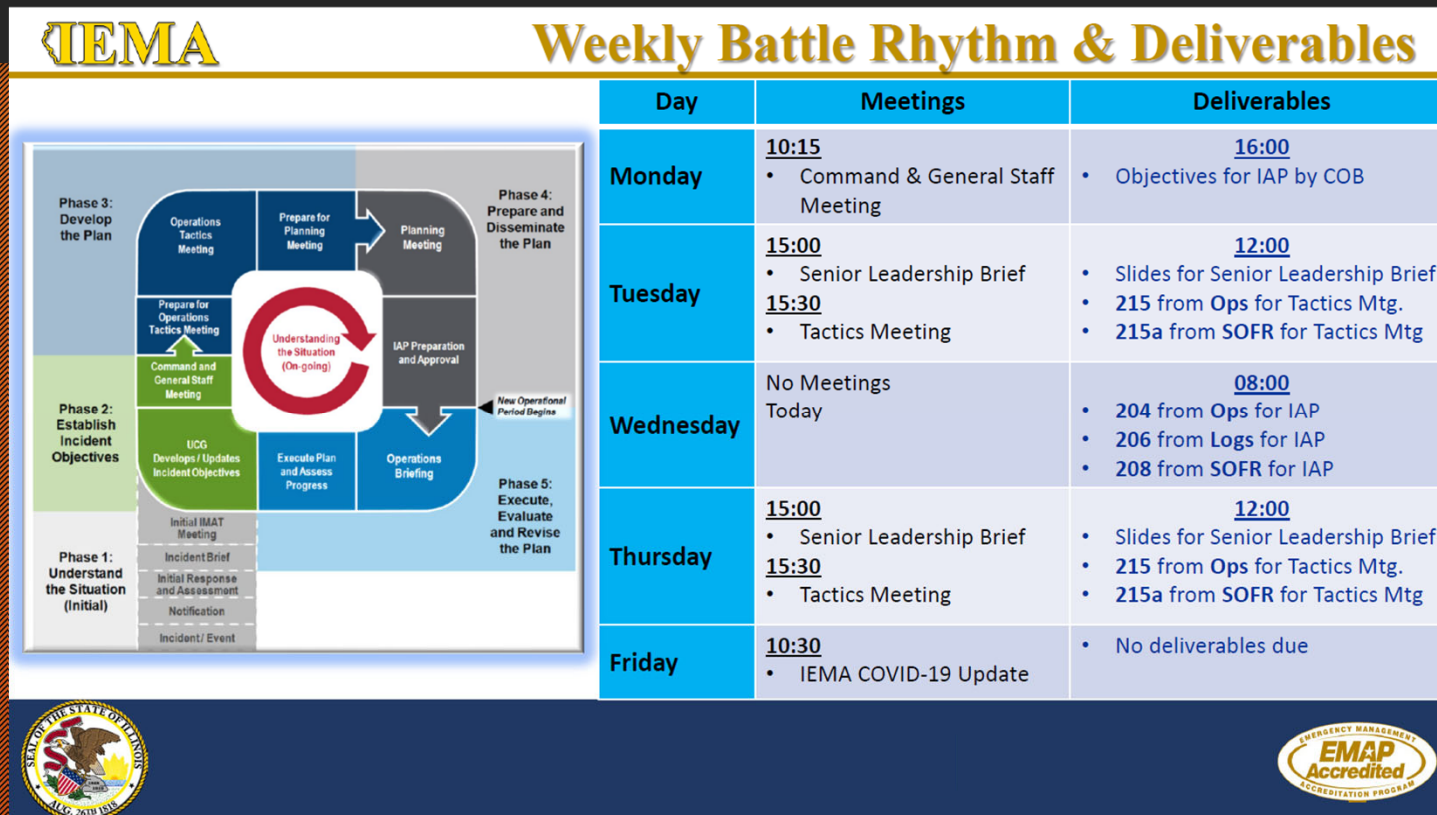
# IAP Forms Provide the Plan

- 201 Incident Briefing
- 202 Incident Objectives
- 203 & 204 Assignment List
- 205 & 205A Communications
- 206 Medical Plan
- 207 Incident Org Chart
- 208 Safety Message
- 211 Check In
- 213 Message

The image displays three overlapping IAP form templates. The top form is 'ICS 201 - Incident Briefing', which includes fields for Incident Name, Version Name, Period, and a table for Objectives. The middle form is 'ICS 202 - Incident Objectives', which includes fields for Incident Name, Version Name, Period, and a table for Objectives. The bottom form is 'ICS 207 - Incident Org Chart', which includes fields for Incident Name, Version Name, Period, and a hierarchical organizational chart. The forms are designed for use in incident management and provide a structured way to plan and execute response actions.



# Battle Rhythm & Deliverables





# Agenda.. *where are we?*

## Introduction

## NIMS

National Incident  
Management System

## ICS

Incident Command  
System

## IAP

Incident Action Plan

## EOP

Emergency Operations  
Plan

## Training

## NQS

National Qualification  
System

## Q & A



# All Hazard Approach

## 7 RISKS

Human

**C**hemical

**B**iological

**R**adiological

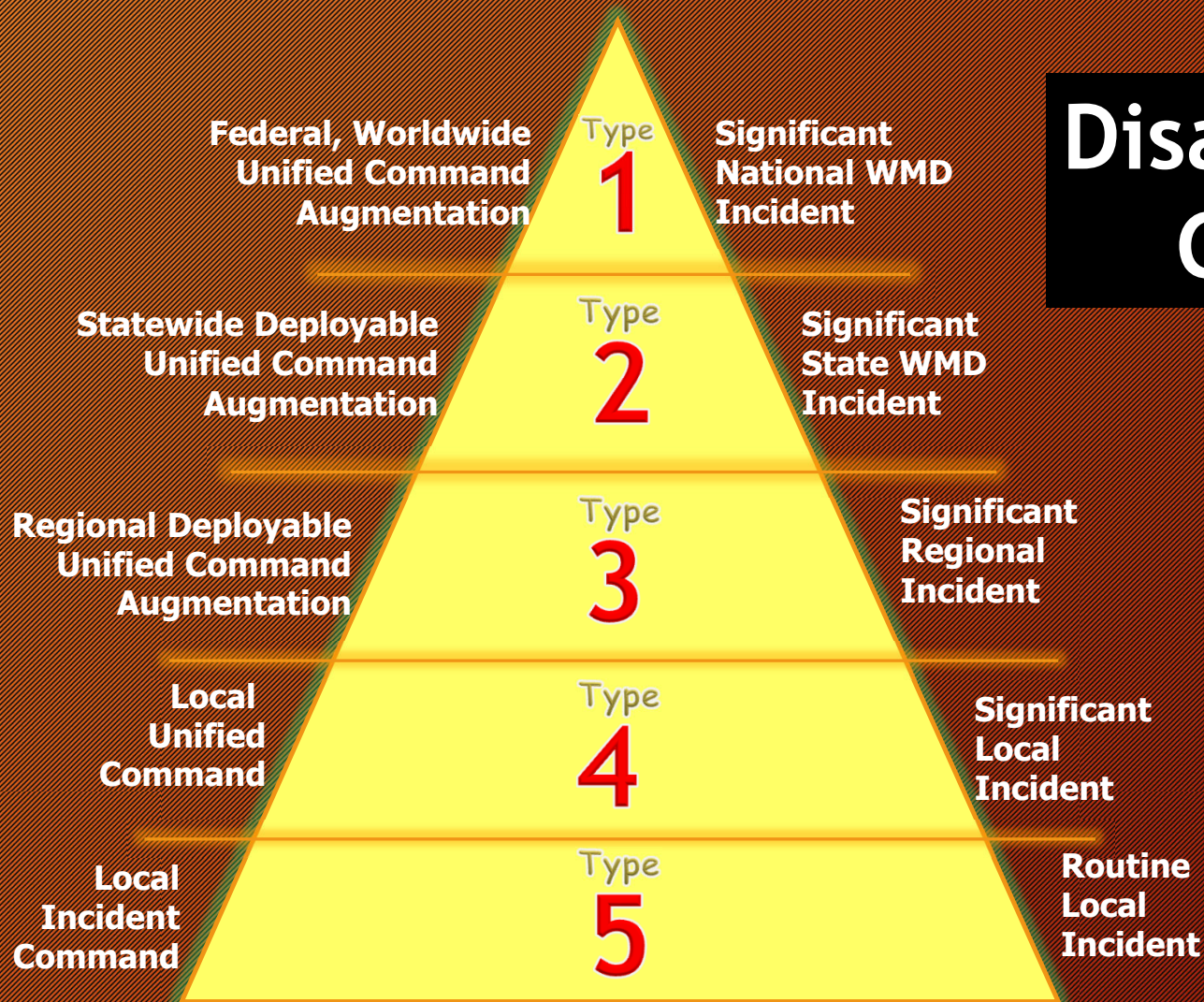
**N**uclear

**E**xplosive

Cyber



# Disaster Typing- Categories





# Command Post (CP) or Forward CP





# EOC (Emergency Operations Center)



Local EOC



State EOC







# Illinois' Risk Assessment



- International Port and Airports
- Major highway systems, railroads, rivers
- 11 nuclear reactors at 6 sites
- Third largest city in the nation (Chicago)
- Tallest structure in the nation (Willis Tower)
- Located in “Tornado Alley”
- Located within Earthquake zones
- Has major agricultural industry
- *“What are your local risks?”*



# Risk Assessment Tools

HAZARD	PROBABILITY	MAGNITUDE	WARNING	DURATION	RISK PRIORITY
Protest/ Civil Disturbance	4-Highly Likely 3-Likely 2-Possible 1-Unlikely	4-Catastrophic 3-Critical 2-Limited 1-Negligible	4- Minimal 3- 6-12 hours 2- 12-24 hours 1- 24+ hours	4- 12+ hours 3- 6-12 hours 2- 3-6 hours 1- <3 hours	<input type="checkbox"/> High <input type="checkbox"/> Medium <input type="checkbox"/> Low
Power Outage	4-Highly Likely 3-Likely 2-Possible 1-Unlikely	4-Catastrophic 3-Critical 2-Limited 1-Negligible	4- Minimal 3- 6-12 hours 2- 12-24 hours 1- 24+ hours	4- 12+ hours 3- 6-12 hours 2- 3-6 hours 1- <3 hours	<input type="checkbox"/> High <input type="checkbox"/> Medium <input type="checkbox"/> Low
Tornado	Etc.	Etc.	Etc.	Etc.	Etc.
Cyber Attack	Etc.	Etc.	Etc.	Etc.	Etc.



# EOP Components

- Function Focused?
- NRF & ESF Format?
  - Basic Plan
  - ESFs
  - Annexes
  - Appendices

ESF	Function
ESF 1	Transportation
ESF 2	Communications
ESF 3	Public Works & Engineering
ESF 4	Fire Fighting
ESF 5	Information and Planning
ESF 6	Mass Care, Emergency Assistance, Temp. Housing & Human Services
ESF 7	Logistics
ESF 8	Public Health & Medical Services
ESF 9	Search & Rescue
ESF 10	Oil & Hazardous Materials Response
ESF 11	Agriculture & Natural Resources
ESF 12	Energy
ESF 13	Public Safety & Security
ESF 14	Cross-Sector Business & Infrastructure
ESF 15	External Affairs
ESF	Other ESFs as defined by JHA



# Exercise Types





# Position Specific Qualification System

- FEMA has position specific qualification system.
- National CERT Association is in the process of developing a system.
- State of Illinois - IEMA is in the process of developing a system.
- CERT Association Illinois is monitoring.
- All state deployable assets through the State will be required to follow.
- No local statewide mandate. Stay tuned!



# Position Specific Training & Task Books

## • Training Available

- Emergency Management Institute (EMI)
- National Fire Academy (NFA)
- Illinois
  - ITTF funds
  - FSI, IESMA, ILEAS, MABAS, etc.

## • Type of Training

- Web-Based Independent Study or
- Classroom (in person and remote)
- Combo of the two.

## • Task Books Not Started

- One for each position
- Have time limits for completion.
- Demonstrate individual has the tools, knowledge and experience to perform the position.
- Qualification requires peer review.
- Qualification is good for 5 years. Field activity extends the timeline.



# What Have We Discussed Tonight?



- NIMS & ICS are integral to our operations, plans and procedures.
- Training and Exercises ensure we follow the procedures and are ready for risks.
- Qualification standards are coming as a national standard.

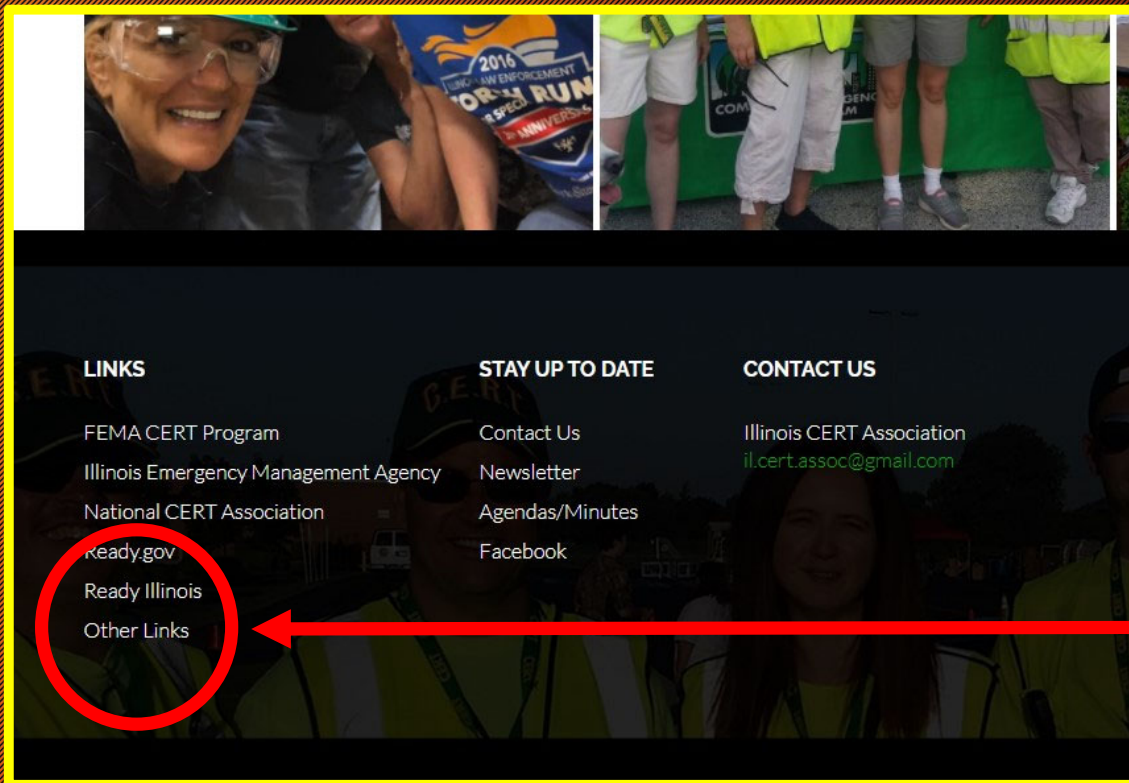


# Links/Resources

- HSPD 5: <https://www.dhs.gov/publication/homeland-security-presidential-directive-5>
- IEMA: <https://www2.illinois.gov/iema/Pages/default.aspx>
- IEMA Training Calendar: <http://public.iema.state.il.us/iema/training/exercises/exercisecalendar.asp>
  - To register for a class: <https://public.iema.state.il.us/iema/Training/OnlineReg/classes.asp>
- Ready Illinois: <https://www2.illinois.gov/ready/Pages/default.aspx>
- ICS Resource Center: <https://training.fema.gov/emiweb/is/icsresource/> (includes NQS Position Task Books)
- ICS Forms: <https://training.fema.gov/icsresource/icsforms.aspx>
- FEMA SID (student Identification number) Registration: <https://cdp.dhs.gov/FEMASID>
- National Qualification System: <https://www.fema.gov/emergency-managers/nims/components#nqs>
- National CERT Association: <https://nationalcert.org>
- CERT Association of Illinois: <https://certillinois.com> *Links are listed in "Knowledge Base", under Membership Tab*



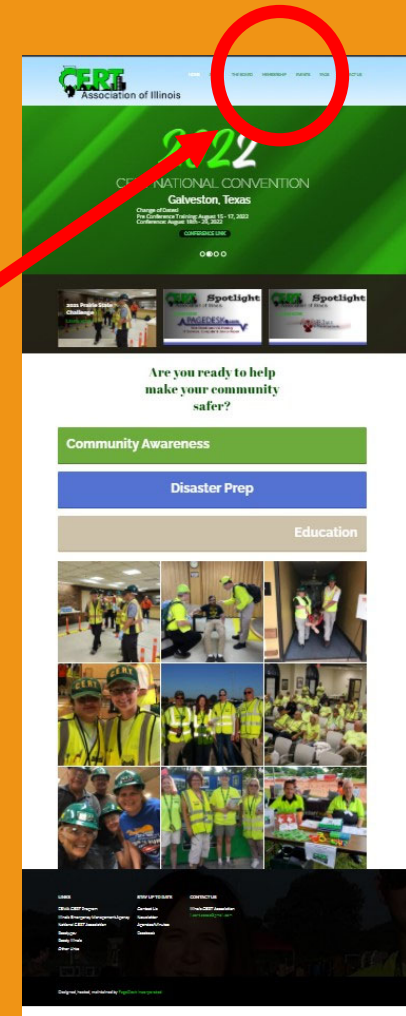
# How To Find Resource List and PPT





# How To Find Resource List and PPT

- Go to certillinois.org





# Resource List and PPT

## Resource List

### Links

📅 Posted February 28, 2022 ✎ Updated February 28, 2022 👤 By pagedesk

AGENCY/ORGANIZATION (in alpha order)	RESOURCE/TOPIC	Website	Website Note
American Red Cross (ARC)	Training Opportunities	<a href="#">Click Here</a>	
Center for Domestic Preparedness (CDP)	Training Opportunities	<a href="#">Click Here</a>	
CERT Association of Illinois	Training Calendar	<a href="#">Click Here</a>	
Civic Plus	How to Set Up a Community CERT	<a href="#">Click Here</a>	Requires you register with an email
Federal Emergency Management Agency (FEMA)	Independent Study Program (IS)	<a href="#">Click Here</a>	
Federal Emergency Management Agency (FEMA)	Campus CERT Starter Guide	<a href="#">Click Here</a>	
Federal Emergency Management Agency (FEMA)	CERT Liability Guide	<a href="#">Click Here</a>	
Federal Emergency Management Agency (FEMA)	ICS Forms	<a href="#">Click Here</a>	
Federal Emergency Management Agency (FEMA)	FEMA Student ID Number (SID)	<a href="#">Click Here</a>	
Federal Emergency Management Agency (FEMA)	National Qualification System	<a href="#">Click Here</a>	
Federal Emergency Management Agency (FEMA)	Worker CERT Starter Guide	<a href="#">Click Here</a>	

## Knowledge Base

### KNOWLEDGE BASE

[Home](#) | [Knowledge Base](#)

How can CERT help you?

Search the documentation...

Choose a Main Topic

General Information

 Links

 Links





# Q&A to Conclusion

Mike Moos, Director  
Sherman Emergency Management Agency

[mmoos@shermanil.org](mailto:mmoos@shermanil.org)

217.306.1942

[www.shermanil.org](http://www.shermanil.org)